



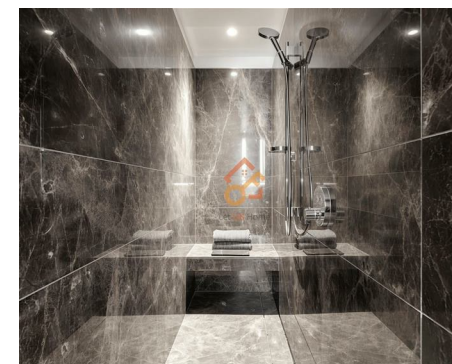
Let **UK** Home

3 Bedrooms

Flat

Located in London

£6,300 Per Month



info@letukhome.co.uk

<https://www.letukhome.co.uk/>

01795 358 886



8 Carnation Way London

SW8 5FT



Let UK Home are excited to offer this spectacular three bedroom apartment in One Thames City in Nine Elms.

This property features a spacious, bright open-plan kitchen and living room with excellent views. It comprises three bedrooms – both the master and secondary bedrooms are fitted with built-in wardrobes, while the master bedroom benefits from a private ensuite bathroom. The residence is completed by a generous family bathroom and abundant storage space throughout.

The residents living in this apartment will enjoy concierge service, constant temperature skylight swimming pool, private club, gym, private cinema, private banquet hall, library, red wine and cigar bar, sky terrace viewing bar, sunken courtyard and other facilities.

The apartment is close to the transportation hub, with multiple modes of transportation such as subway, train and Thames Clippers. The nearest station to the development is Vauxhall, which is within walking distance. There is the Victoria subway line and multiple train and bus lines to central London such as the Houses of Parliament, Kensington, Oxford Street, Tower Bridge.

One Thames City enjoys an unrivalled central London location with excellent access to a wide range of prestigious educational institutions, including the University of London, Imperial College London, LSE, King's College London, the Royal College of Music, the Royal College of Art and Central Saint Martins.

8 Carnation Way London

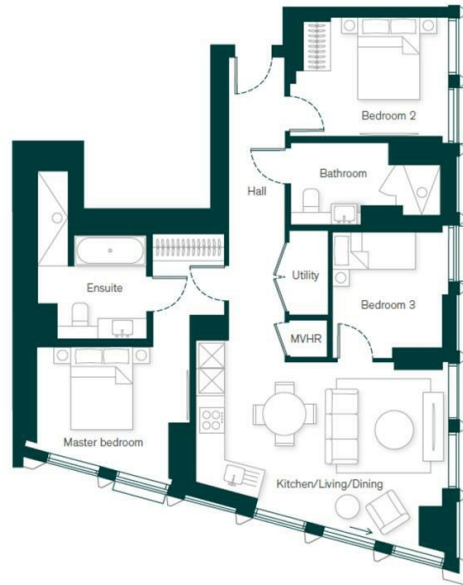
£6,300 Per Month



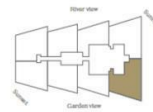
- 34th Floor
- 24h Security
- The Gym
- The Spa
- EPC Rating: B

- Concierge Service
- Swimming Pool
- Cinema & Game Room
- Private Dining Room





3 bedroom	95.15 sq m/1,024 sq ft	
Kitchen/living/dining	5.41 x 3.97m	17' 9" x 13' 0"
Primary bedroom	3.80 x 2.93m	12' 6" x 9' 7"
Bedroom 2	2.89 x 2.86m	9' 6" x 9' 5"
Bedroom 3	2.81 x 2.80m	9' 3" x 9' 2"



Let **UK** Home

3F 2 Eastbourne Terrace
 Paddington
 London
 W2 6LG

01795 358 886

info@letukhome.co.uk

Council Tax Band: G

Local Authority:

Agents Note: Whilst every care has been taken to prepare these particulars, they are for guidance purposes only. All measurements are approximate and are for general guidance purposes only and whilst every care has been taken to ensure their accuracy, they should not be relied upon and potential buyers/tenants are advised to recheck the measurements.

Energy Efficiency Rating		Current	Potential
Very energy efficient - lower running costs			
(92 plus) A			
(81-91) B		85	85
(69-80) C			
(55-68) D			
(39-54) E			
(21-38) F			
(1-20) G			
Not energy efficient - higher running costs			
England & Wales	EU Directive 2002/91/EC		

<https://www.letukhome.co.uk/>